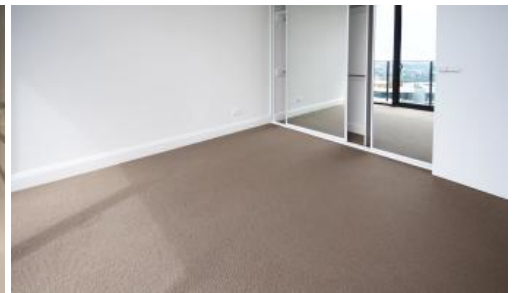




Unit 2309, 42 Walker St, Rhodes



Modern Contemporary 2 Bedroom Apartment with Larger Winter Garden & Waterview

Just 25 minutes from the CBD, everything you need is close at hand in Rhodes. With such a convenient location, it's just only 2 minutes away from Rhodes train station and 5 minutes away from the major shopping centre. Moments away you'll also find leading schools, Universities, Childcare, Medical Centre, Gymnasium, Golf courses and more.

Apartment Features:

- 2 generous bedrooms with built-in robes
- A modern, open plan layout with free-flowing living areas
- Solar Tinted Double Glazed Glass (Energy Efficient - Noise Reduction)
- Well-equipped kitchen with European stainless steel microwave and integrated dishwasher
- Big internal laundry with dryer
- Reverse cycle air-conditioning system (cooler + heater)
- Security intercom system and secure building access
- NBN

Development Features:

- Dedicated onsite building manager ensures all apartments and facilities are kept to a high standard, and any maintenance is promptly addressed
- 24h security
- Large landscaped gardens
- Undercover 2 security parking and storage
- Call Alan on 0410413886 for inspection

2 2 2

Price	DEPOSIT TAKEN
Property Type	Rental
Property ID	997

Agent Details

Zhong Ying (Alan) Tong - 0410413886

Office Details

Ashfield
Suite 58 1 Brown Street Ashfield NSW
2131 Australia
02 9799 8886



accurate and do not have any belief in one way or the other in its accuracy. We do not accept any responsibility to any person for its accuracy and do no more than pass it on. All interested parties should make and rely upon their own inquiries in order to determine whether or not this information is in fact accurate.