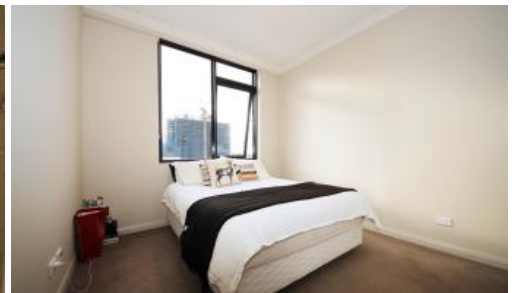




**804, 47 Hill Road, Wentworth Point**



## Top Floor Spacious 2 Bedroom plus Study

Positioned in a very convenient location, this spacious Top Floor 2 Bedroom plus Study apartment offers ideal layout and sleek interiors finishes with high standard quality.

- Sunlight filled living and dinning area.
- Spacious bedrooms with built-in wardrobe, main bedroom with ensuite, second bedroom with a separate balcony.
- Caesar stone decorated modern kitchen including European stainless steel appliances, gas cooking, plenty of cabinets.
- Fully tiled stylish bathroom, frameless shower screen, modern designed vanity and mirror cabinet.
- Bus at the door directly to Olympic Park station, Strathfield and Burwood
- Short stroll to Ferries to Sydney CBD and Parramatta, and footbridge to Rhodes and Station
- 14km from Sydney CBD and 8km from Parramatta CBD
- Short drive to large retail and dining precincts including Rhodes, Top Ryde and Parramatta

Contact Erica on 0423786803 for inquiries or inspection.

2 2 1

**Price** Deposit Taken & Open  
Cancelled

**Property Type** Rental  
**Property ID** 901

### Agent Details

Yim (Kelvin) Kam - 0449863838

### Office Details

Ashfield  
Suite 58 1 Brown Street Ashfield NSW  
2131 Australia  
02 9799 8886



The above information provided has been furnished to us by the vendor/s. We have not verified whether or not that information is accurate and do not have any belief in one way or the other in its accuracy. We do not accept any responsibility to any person for its accuracy and do no more than pass it on. All interested parties should make and rely upon their own inquiries in order to determine whether or not this information is in fact accurate.