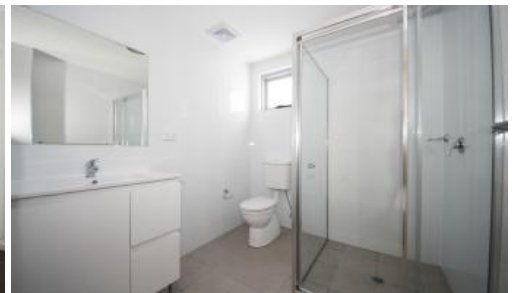




21, 32 Station Street, Dundas



Huge Top Floor 1 Bedroom Apartment

Modern apartment conveniently located with short walk to train station, shops, cafes, and local parks. 15 minutes drive to Parramatta CBD and Eastwood. It offers a generous well-appointed floor plan in a super convenient location.

- Top floor with big balconies and good view
- Huge bedroom with built-in wardrobe
- Open plan living and dining
- Gourmet kitchen with high quality stainless steel appliances, gas cook top & Caesar stone bench tops
- Internal laundry
- Security intercom system and secure building access
- Registered car space in secure basement parking
- Close proximity to Dundas station, shops, cafes, and local parks

1 1 1

Price
Property Type
Property ID

Deposit Taken!
Rental
661

Agent Details

Yim (Kelvin) Kam - 0449863838

Office Details

Ashfield
Suite 58 1 Brown Street Ashfield NSW
2131 Australia
02 9799 8886

The above information provided has been furnished to us by the vendor/s. We have not verified whether or not that information is accurate and do not have any belief in one way or the other in its accuracy. We do not accept any responsibility to any person for its accuracy and do no more than pass it on. All interested parties should make and rely upon their own inquiries in order to determine whether or not this information is in fact accurate.

