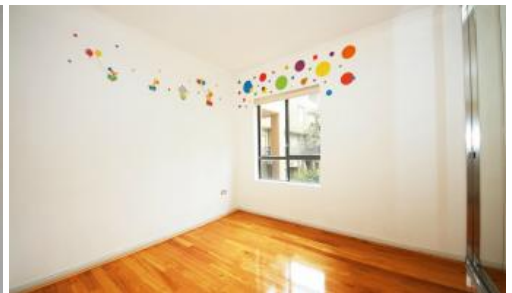




36, 22-26 Herbert Street, West Ryde



Spacious and Modern Two Bedroom Apartment

Spacious and Modern two bedroom apartment with timber hardwood floorboards and modern lighting.

- Modern Open Plan Gas Kitchen with Stainless Steel Appliances & Granite Bench tops.
- Enormous Sized Combined Lounge & Dining.
- Fantastic Sized Tiled Balcony, Perfect For The Entertainer!
- Two Double Sized Bedrooms. Master Bedroom with Mirrored Walk-In Wardrobe & Second Bedroom with Mirrored Built-In Wardrobe
- Modern En-Suite off Master Bedroom
- Internal Laundry
- Security Complex with Elevator.
- Large Lock Up Garage in Secured Parking Area.

Walking distance to local/city Buses, West Ryde Train Station, local parks, local shops & West Ryde shopping Village.

The above information provided has been furnished to us by the vendor/s. We have not verified whether or not that information is accurate and do not have any belief in one way or the other in its accuracy. We do not accept any responsibility to any person for its accuracy and do no more than pass it on. All interested parties should make and rely upon their own inquiries in order to determine whether or not this information is in fact accurate.

2 2 1

Price
Property Type
Property ID

Deposit Taken
Rental
643

Agent Details

Yim (Kelvin) Kam - 0449863838

Office Details

Ashfield
Suite 58 1 Brown Street Ashfield NSW
2131 Australia
02 9799 8886

