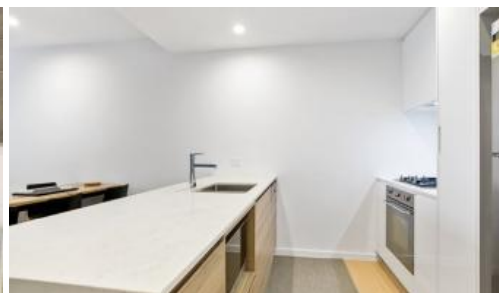


Leased

209, 268-270 Liverpool Road, Ashfield



## Contemporary Spacious 2 Bedder

A spacious two bedder apartment which offers an abundance of natural light. This 9 months old apartment offers a high quality finishings including floorboards throughout, reconstituted stone kitchen bench top & Large bedroom including built-in wardrobe.

Located in the heart of Ashfield, with a 5 minute walk to Ashfield Shopping Centre, local shops, cafes, pubs and diners. Transportation is also at it's finest as the Bus Stop is less than a minute away and 5 minutes walk to Ashfield Station. This modern apartment offers convenience at it's finest.

- Luscious kitchen, granite benchtops, new appliances - Double bedroom, new built-in wardrobe/desk - Spacious lounge room with new Tasmanian oak flooring - Spacious bathroom, Brod ware fittings, frameless shower - Large internal laundry, storage and dryer, community garden - Ducted air conditioning throughout - Secure car space and storage cage

The above information provided has been furnished to us by the vendor/s. We have not verified whether or not that information is accurate and do not have any belief in one way or the other in its accuracy. We do not accept any responsibility to any person for its accuracy and do no more than pass it on. All interested parties should make and rely upon their own inquiries in order to determine whether or not this information is in fact accurate.

🛏 2 🚿 1 🚗 1

Price  
Property Type  
Property ID

Deposit Taken  
Rental  
316

### Agent Details

Ye Li (Shirley) Zhang - 0424072823

### Office Details

Ashfield  
Suite 58 1 Brown Street Ashfield NSW  
2131 Australia  
02 9799 8886

C A P R I  
PROPERTY MANAGEMENT