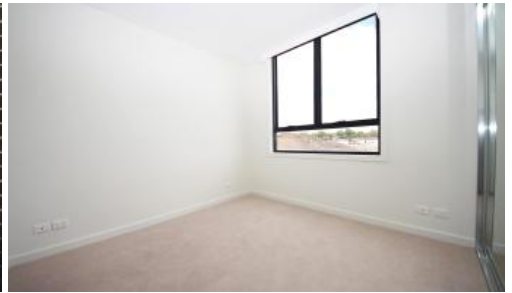




Unit 3, 14 Victa St, Campsie



3/14 Victa Street, Clemton Park

This apartment is located in the newly completed Clemton Park Village, offering convenient lifestyle, footsteps to Coles Supermarket, coffee shops and many of the finest eateries this complex has to offer.

- * Spacious bedrooms with built-ins
- * Sleek kitchen with gas cooking, modern appliances & dishwasher
- * Open plan living & dining opening
- * Modern bathroom with luxury inclusions
- * Security intercom, internal laundry with dryer
- * Secured car space & storage

Be first to inspect.

Contact Alan to arrange inspections.
0410413886

The above information provided has been furnished to us by the vendor/s. We have not verified whether or not that information is accurate and do not have any belief in one way or the other in its accuracy. We do not accept any responsibility to any person for its accuracy and do no more than pass it on. All interested parties should make and rely upon their own inquiries in order to determine whether or not this information is in fact accurate.

2 2 1

Price	Deposit Taken
Property Type	Rental
Property ID	282

Agent Details

Yim (Kelvin) Kam - 0449863838

Office Details

Ashfield
Suite 58 1 Brown Street Ashfield NSW
2131 Australia
02 9799 8886

