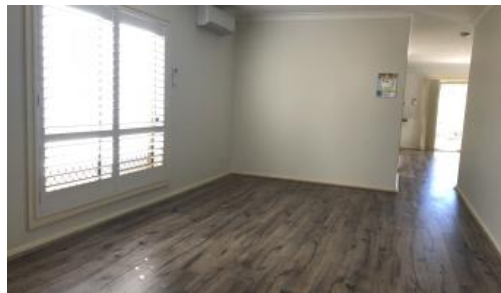




4A Mars St, Padstow



Beautifully Suburban 4 Bedder

Designed to accommodate an effortless family lifestyle, this home is erected in a quiet suburban with beautiful and calm surroundings. This generous size two level residence is presented in a sought after location of Padstow. The home offers a contemporary feel with a immaculate conditioned interiors and spacious yard with a in ground pool. It provides a very private family retreat and an amazing sense of seclusion yet is within only walking distance to local schools, transport, parks and shops.

- 4 bedrooms with Built-In Robes, Main bedroom with Walk-In Robe and Ensuite
- Separate and spacious in both Lounge and Dining areas
- Immaculate kitchen with stainless steel Appliances and Granite benches
- Main bathroom + internal laundry with 2nd bathroom for your convenience
- Spacious Entertainer's Yard
- Tucked away sparkling in ground pool perfect for hot days
- Tandem lock up garage with internal access to the home
- Walking distance to Padstow Train Station, Buses, Shops, Schools and Local Parks

The above information provided has been furnished to us by the vendor/s. We have not verified whether or not that information is accurate and do not have any belief in one way or the other in its accuracy. We do not accept any responsibility to any person for its accuracy and do no more than pass it on. All interested parties should make and rely upon their own inquiries in order to determine whether or not this information is in fact accurate.

4 Beds 3 Bathrooms 2 Car Spaces

Price DEPOSIT TAKEN & INSPECTION CANCELLED

Property Type Rental

Property ID 264

Agent Details

Ye Li (Shirley) Zhang - 0424072823

Yim (Kelvin) Kam - 0449863838

Office Details

Ashfield

Suite 58 1 Brown Street Ashfield NSW

2131 Australia

02 9799 8886

C A P R I
PROPERTY MANAGEMENT