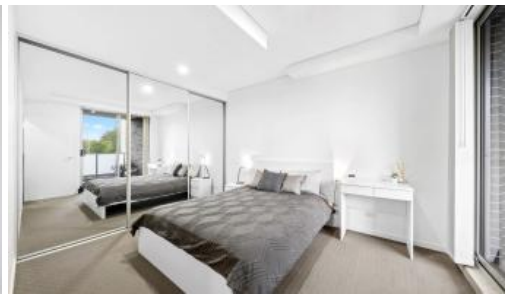




Unit 25, 8 Maida Rd, Epping



Modern One-Bedroom Apartment in Prime Epping Location

Enjoy a stylish urban lifestyle in this contemporary one-bedroom apartment, perfectly positioned in a quiet yet convenient neighbourhood. Located just 650m from Epping Station, shops and cafés, and only a 2-minute drive to Eastwood, this home offers comfort and convenience at your doorstep.

Features include:

- Spacious open-plan living and dining area opening to a large entertaining balcony with leafy outlooks
- Gourmet gas kitchen with European stainless-steel appliances and Caesarstone benchtops
- Generous bedroom with walk-in wardrobe and access to a private balcony
- Modern designer bathroom with premium fittings
- Air conditioning, internal laundry, and in-house security alarm
- Secure undercover parking with additional lock-up storage
- Situated within a highly sought-after school catchment area

Perfect for professionals or couples seeking a low-maintenance lifestyle in a premium location.

The above information provided has been furnished to us by the vendor/s. We have not verified whether or not that information is accurate and do not have any belief in one way or the other in its accuracy. We do not accept any responsibility to any person for its accuracy and do no more than pass it on. All interested parties should make and rely upon their own inquiries in order to determine whether or not this information is in fact accurate.

1 bed 1 bath 1 car

Price DEPOSIT TAKEN \$680 per week

Property Type Rental

Property ID 2106

Agent Details

Jason Wu - 0493243385

Yim (Kelvin) Kam - 0449863838

Office Details

Ashfield

Suite 58 1 Brown Street Ashfield NSW

2131 Australia

02 9799 8886

