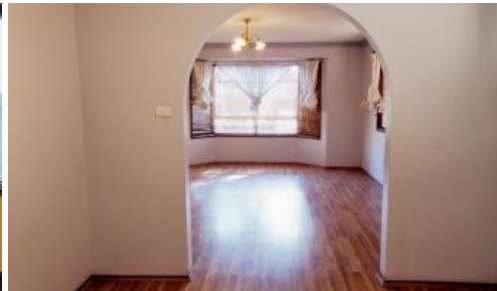


Just Listed



108 Armitree St, Kingsgrove



A Perfect Family Home in a Peaceful, Convenient Location

Ideally positioned at the end of a quiet cul-de-sac and next to a serene park, this spacious and light-filled two-storey home offers the perfect setting for relaxed family living. Well-maintained and thoughtfully designed, it combines comfort, practicality, and convenience in a family-friendly neighbourhood.

Key Features:

- **Prime Location:** Just a short walk to Kingsgrove Station, local schools, Woolworths, parks, and Canterbury Golf Course—making everyday errands and commutes easy for the whole family.
- **Spacious Living:** Four generous bedrooms with built-in wardrobes, including a master with ensuite and private balcony overlooking a peaceful nature reserve.
- **Functional Layout:** 2.5 bathrooms including a main bathroom with separate shower, bathtub, and toilet for family convenience.
- **Family-Friendly Design:** Open-plan kitchen, dining, and family area—ideal for entertaining or spending quality time together.
- **Quality Finishes:** Polished floorboards throughout for a clean and modern look that's also easy to maintain.
- **Added Comfort:** Internal laundry, garage with in-house access, plus two car spaces for added practicality.
- **Modern Amenities:** Enjoy NBN connectivity, a gas cooktop, electric hot water system with temperature control, and solar panels for energy efficiency.
- **Outdoor Space:** A large backyard with garden shed, and plenty of room for kids to play or for growing your own plants.

This home offers a rare combination of location, lifestyle, and liveability—making it an excellent choice for families seeking a comfortable and connected home environment.

🛏 4 🚿 2 🚗 2

Price	\$930 Per Week
Property Type	Rental
Property ID	2039

Inspection Times

Sat 02 Aug, 10:15 AM - 10:45 AM

Agent Details

Jason Wu - 0493243385

Yim (Kelvin) Kam - 0449863838

Office Details

Ashfield

Suite 58 1 Brown Street Ashfield NSW

2131 Australia

02 9799 8886

C A P R I
PROPERTY MANAGEMENT

The above information provided has been furnished to us by the vendor/s. We have not verified whether or not that information is accurate and do not have any belief in one way or the other in its accuracy. We do not accept any responsibility to any person for its accuracy and do no more than pass it on. All interested parties should make and rely upon their own inquiries in order to determine whether or not this information is in fact accurate.