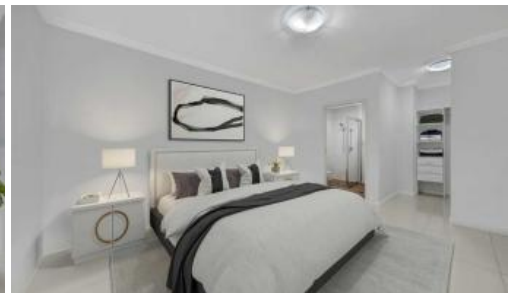


Leased

308, 11 Hercules St, Ashfield



## Spacious & Sunny 4 Bedroom Apartment

Perfectly positioned just a 2-minute walk from Ashfield train station, this beautifully presented 3-bedroom apartment offers an exceptional lifestyle of convenience and comfort. The spacious open-plan living and dining area flows seamlessly to a private balcony—perfect for relaxed entertaining. With tiled flooring throughout, the apartment offers a low-maintenance lifestyle, while the modern kitchen is equipped with quality finishes and gas cooking. Situated moments from Ashfield Mall, vibrant cafes, and popular restaurants, this is a perfect place to call home.

### Key Features:

- Three generously sized bedrooms with built-in wardrobes
  - Dedicated study nook—ideal for working from home
  - Contemporary kitchen with stone bench tops, stainless steel appliances & gas cooking
  - Air conditioning throughout for year-round comfort
  - Private balcony perfect for entertaining or unwinding
  - Undercover car space in secure basement parking with additional storage
  - Security intercom and lift access
  - Access to a communal rooftop terrace with sweeping district views
  - Only minutes' walk to Ashfield Station, Ashfield Mall, cafes, and restaurants
- 
- Call or text Shirley on 0424072823 for inspection.

3 2 1

**Price** 3 bedroom apartment  
\$1,000/Week

**Property Type** Rental  
**Property ID** 1966

### Agent Details

Ye Li (Shirley) Zhang - 0424072823

### Office Details

Ashfield  
Suite 58 1 Brown Street Ashfield NSW  
2131 Australia  
02 9799 8886



The above information provided has been furnished to us by the vendor/s. We have not verified whether or not that information is accurate and do not have any belief in one way or the other in its accuracy. We do not accept any responsibility to any person for its accuracy and do no more than pass it on. All interested parties should make and rely upon their own inquiries in order to determine

whether or not this information is in fact accurate.