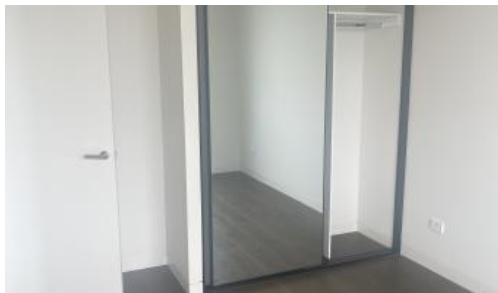




**503, 3 Paddock St, Lidcombe, Lidcombe**



## Brand New Two Bedroom plus One Big study room in Lidcombe!!!

🛏 2 🗺 2 🚗 1

Brand new apartment conveniently located in the Sydney Olympic Park. This modern two bedroom apartment is walking distance to train station bus interchange and Accor Stadium. This impressive apartment offers great onsite amenity - swimming pool, BBQ facility and Gym for residents.

Located in the heart of a dynamic precinct currently undergoing an electrifying transformation, This brand new world-class development puts residents in the centre of the action.

- One big multi functional room.
- Versatile and sunlit open spaces with ducted air-conditioning, video intercom, roller blinds and marble floor tiles throughout
- Stylish kitchens with luxurious 40mm stone waterfall benchtops, plentiful storage with soft-close drawers and cupboards
- Elegant stone splash backs and high end Miele stainless steel appliances including ducted range hood, gas cooktop, oven and semi-integrated dishwasher
- Sleek bathrooms feature wall tiles with timber accents, frameless glass shower screens, designer-lit mirrored cabinets and concealed cistern
- Stunning bedrooms with built in mirrored wardrobe and timber flooring

Please message 0493227675 for book inspection.

**Price** \$750 deposit taken, inspection cancel

**Property Type** Rental

**Property ID** 1919

### Agent Details

Zhong Ying (Alan) Tong - 0410413886

### Office Details

Ashfield  
Suite 58 1 Brown Street Ashfield NSW  
2131 Australia  
02 9799 8886



The above information provided has been furnished to us by the vendor/s. We have not verified whether or not that information is accurate and do not have any belief in one way or the other in its accuracy. We do not accept any responsibility to any person for its accuracy and do no more than pass it on. All interested parties should make and rely upon their own inquiries in order to determine whether or not this information is in fact accurate.