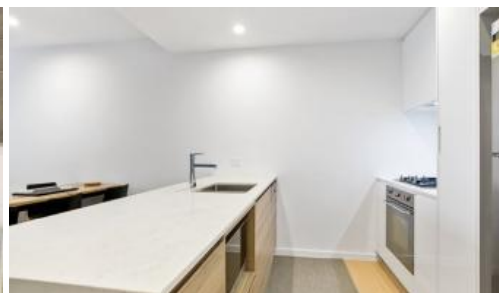


Leased

209, 268-270 Liverpool Road, Ashfield



## Contemporary Spacious 2 Bedder

A spacious two bedroom apartment which offers an abundance of natural light and a high quality finishing including floorboards in the living area, reconstituted stone kitchen bench top & Large bedroom including built-in wardrobe.

It located in the heart of Ashfield, with a 2 minute walk to Ashfield Shopping Centre, local shops, cafes, pubs and restaurants. Transportation is also at it's finest as the Bus stop is next to the building and 5 minutes walk to Ashfield train Station.

- Luscious kitchen, granite bench tops - Double bedroom, built-in wardrobe - Spacious lounge room with Tasmanian oak flooring - Spacious bathroom with frame-less shower - Large internal laundry, storage and dryer, community garden - Duct air conditioning throughout - Secure car space

The above information provided has been furnished to us by the vendor/s. We have not verified whether or not that information is accurate and do not have any belief in one way or the other in its accuracy. We do not accept any responsibility to any person for its accuracy and do no more than pass it on. All interested parties should make and rely upon their own inquiries in order to determine whether or not this information is in fact accurate.

2 1 1

Price

Deposit taken  
\$650/Week

Property  
Type

Rental

Property ID 1652

### Agent Details

Ye Li (Shirley) Zhang - 0424072823

### Office Details

Ashfield  
Suite 58 1 Brown Street Ashfield NSW  
2131 Australia  
02 9799 8886

C A P R I  
PROPERTY MANAGEMENT