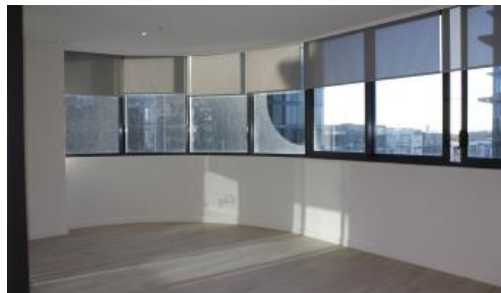




**Unit 809, 11 Wentworth Pl, Wentworth Point**



## Modern Contemporary 3 Bedroom Apartment in Marina Square

Recognised as one of the newest and most luxurious apartment available in this precinct, this high end floor plan captures an abundance of natural light and expansive open living, stretches out viewing the river through its large winter garden overlooking water view.

Marina Square under building

Walking distance to Rhodes, Wentworth Point Public School, Shopping area and all amenities.

### Feature

- 3 Well sized Bedrooms w built in robes
- Spacious lounge w water view
- A/C in lounge and all bedrooms.
- Glass shower with marble style tiles
- Well-appointed kitchen area with large stone bench top island and built in ironing board
- Large winter garden with uninterrupted views
- Laundry includes new washing machine
- Stunning lobby area
- Secure parking space w access to lift

3 2 2

**Price** \$950 Deposit taken, inspection cancel

**Property Type** Rental

**Property ID** 1565

### Agent Details

Zhong Ying (Alan) Tong - 0410413886

### Office Details

Ashfield

Suite 58 1 Brown Street Ashfield NSW

2131 Australia

02 9799 8886



Please message Pauline on 0493227675 for inspection

The above information provided has been furnished to us by the vendor/s. We have not verified whether or not that information is accurate and do not have any belief in one way or the other in its accuracy. We do not accept any responsibility to any person for its accuracy and do no more than pass it on. All interested parties should make and rely upon their own inquiries in order to determine whether or not this information is in fact accurate.

