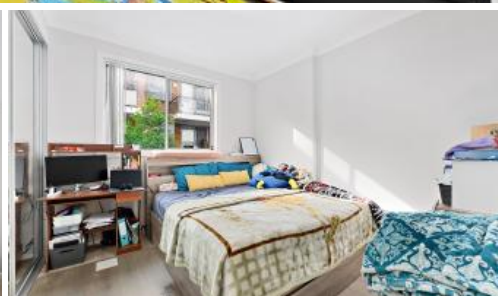


Sold



27, 40-42A Park Avenue, Waitara



Modern & Convenient 2 Bedroom Apartment

This ultra convenient and modern 2 Bedroom Apartment conveniently located just a short walk from Waitara Station and Local Westfield.

- New floorboard recently installed.
- Open plan living and dining area
- Sunny balcony
- Modern kitchen with quality stainless steel appliances
- Stainless steel kitchen appliances Oven, Gas Stove, Dishwasher, Drier
- Large bedrooms with built-ins
- Security Building with security intercom
- Minutes walk to Waitara Train Station, very close to freeway transport, Hornsby Westfield, schools, sports and recreational parks and facilities, and Hornsby Hospital.

- Strata Levy: approx. \$1,100 per quarter
- Council Rate: approx. \$342 per quarter
- Sunny balcony: \$158 per quarter

The above information provided has been furnished to us by the vendor/s. We have not verified whether or not that information is accurate and do not have any belief in one way or the other in its accuracy. We do not accept any responsibility to any person for its accuracy and do no more than pass it on. All interested parties should make and rely upon their own inquiries in order to determine whether or not this information is in fact accurate.

🛏 2 🚿 2 🚗 1

Price	SOLD
Property Type	Residential
Property ID	1541

Agent Details

Anastasios (Tom) Pistevos - 0418112299
Yim (Kelvin) Kam - 0449863838

Office Details

Ashfield
Suite 58 1 Brown Street Ashfield NSW
2131 Australia
02 9799 8886

C A P R I
PROPERTY MANAGEMENT