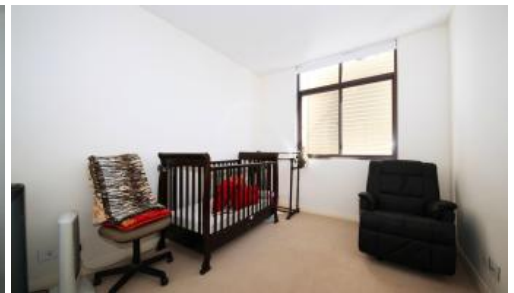
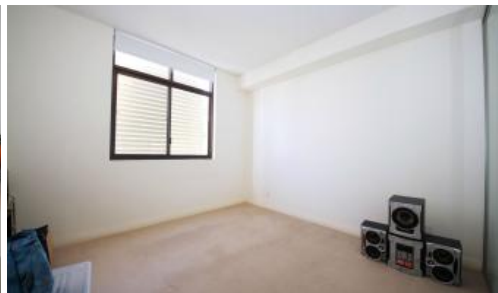




434, 43 Amalfi Drive, Wentworth Point



Modern and Quiet 2 Bedroom Home

- Open plan living and dining area
- Modern kitchen with wide stone bench top and quality stainless steel appliances
- Air Conditioner
- Both Bedrooms with built-ins
- Huge sunny balcony
- Security Building with security intercom
- Bus at the door directly to Olympic Park station, Strathfield and Burwood
- Ferries to Sydney CBD and Parramatta

On-site state of the art facilities (Pulse Club), including gym, indoor heated swimming pool, tennis court.

Please call Alan 0410413886 for inquiry or inspection.

The above information provided has been furnished to us by the vendor/s. We have not verified whether or not that information is accurate and do not have any belief in one way or the other in its accuracy. We do not accept any responsibility to any person for its accuracy and do no more than pass it on. All interested parties should make and rely upon their own inquiries in order to determine whether or not this information is in fact accurate.

2 1 1

Price	Deposit Taken
Property Type	Rental
Property ID	126

Agent Details

Yim (Kelvin) Kam - 0449863838

Office Details

Ashfield
Suite 58 1 Brown Street Ashfield NSW
2131 Australia
02 9799 8886

