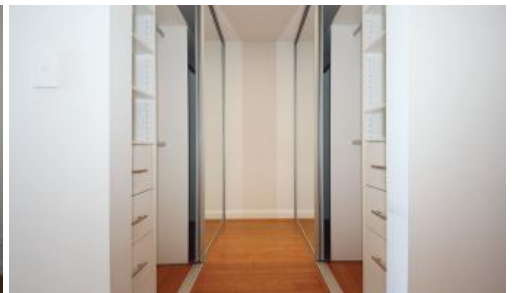
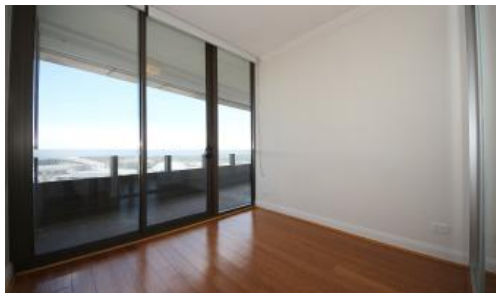




**1910, 1 Australia Avenue, Sydney Olympic Park**



## Marvellous Modern 2 Bedroom Apartment

This Modern 2 bedroom apartment is located in the heart of Sydney Olympic Park with panoramic city view.

### Features:

- Floorboard throughout
- Open plan living and dining area
- Modern kitchen with stone bench top and high quality stainless steel appliances
- Air Conditioning
- Security Building with security intercom
- 3 Minutes Walk to Olympic Park Station. Bus Stops at door step, DFO, Restaurants, Cafes and Convenience store. Drive few minutes to Rhodes Shopping Centre and IKEA.

2 2 1

<b>Price</b>	DEPOSIT TAKEN
<b>Property Type</b>	Rental
<b>Property ID</b>	1151

### Agent Details

Yim (Kelvin) Kam - 0449863838

### Office Details

Ashfield  
Suite 58 1 Brown Street Ashfield NSW  
2131 Australia  
02 9799 8886

The above information provided has been furnished to us by the vendor/s. We have not verified whether or not that information is accurate and do not have any belief in one way or the other in its accuracy. We do not accept any responsibility to any person for its accuracy and do no more than pass it on. All interested parties should make and rely upon their own inquiries in order to determine whether or not this information is in fact accurate.

**C A P R I**  
**PROPERTY MANAGEMENT**